

Highland Museum of Childhood

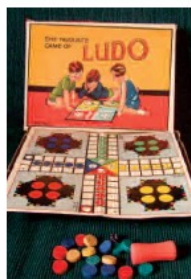
Taigh Tasgaidh Lèanabachd na Gàidhealtachd



The museum tells the story of childhood across the Highlands exploring themes such as schools days, crofting life, birth and early years. It is also home to a vast doll collection

belonging to local lady, Angela Kellie. On display are also toys and games from different eras which give everyone a chance to reminisce. The museum also has a small gift shop.

We welcome school and other group visits to the museum and our education space, The Goods Shed. Please contact us for more information and opening hours. Small entrance fee applies.



T: 01997 421031

E: info@highlandmuseumofchildhood.org.uk

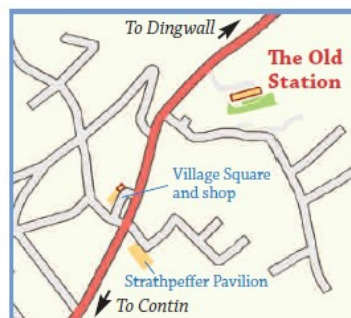
www.highlandmuseumofchildhood.org.uk

How to find us

From Inverness. Take the A9 north to Tore Roundabout, then the A835 to the Mayburgh roundabout. Take the exit to Dingwall (A862) and in Dingwall take the A834 to Strathpeffer. The entrance to The Old Station is first left after the 30mph limit sign. It is signposted for the Highland Museum of Childhood. We're in one of the old station units, that can be entered on the 'platform' side.

From Contin and the west coast (approaching on the A835). Take signs for Strathpeffer (A834) at Contin and go through the village of Strathpeffer until you are nearly through the village and take a right at the sign for the Highland Museum of Childhood.

From the centre of Strathpeffer (by foot). Walk down the hill approximately 800 yards towards Dingwall. Take a right turn down the drive before the last few houses going out of the village.



Other facilities on site are toilets, and gardens with picnic area. There is ample parking with disabled bays and wheelchair access onto the platform.

Highland Museum of Childhood

The Old Station

Strathpeffer

Ross-shire

IV14 9DH

T: +(44) 01997 421031

E: info@highlandmuseumofchildhood.org.uk

www.highlandmuseumofchildhood.org.uk

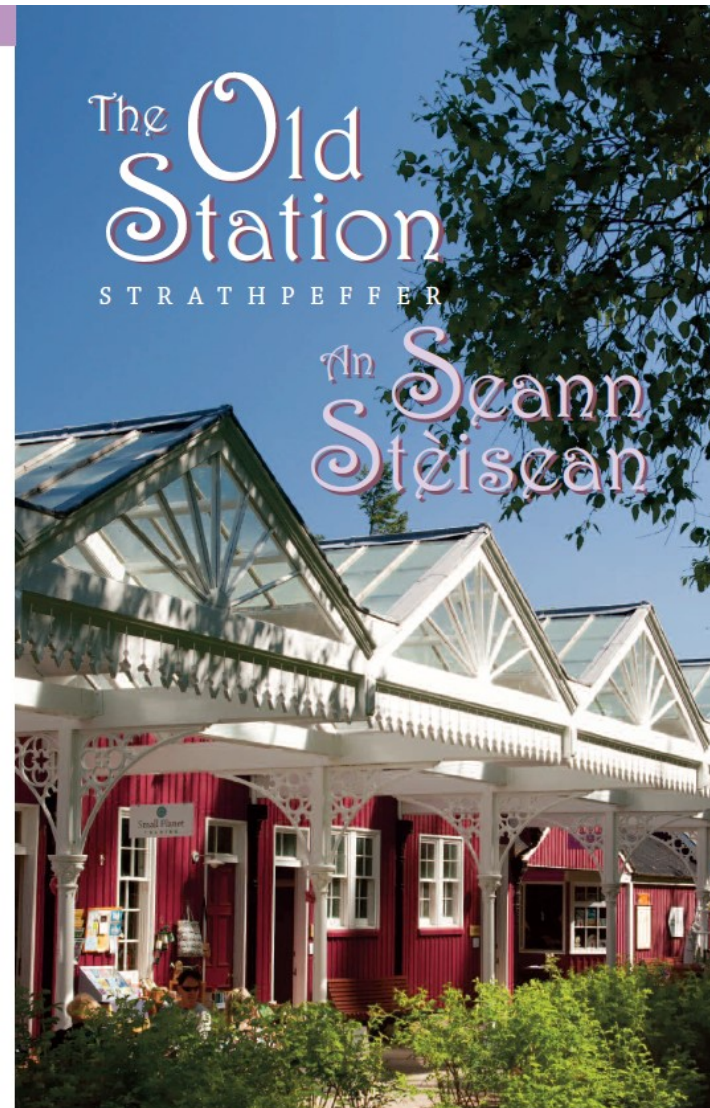


@highlandmuseumofchildhood

The Old Station

STRATHPEFFER

An Seann Stèisean



Set in charming location in the Victorian spa village of Strathpeffer, the Old Station is now a visitor centre with a museum, coffee shop, gift shop and beauty salon. The station building has been restored and many of its original features still exist. The perfect place to relax, have a coffee and do some shopping.

Museum Coffee Shop



The Museum Coffee Shop is the perfect place to start your day with a hearty breakfast or to recharge your batteries with delicious coffee and cake. We serve fresh, home - made food including breakfast, lunch and light

meals. We have gluten free and vegetarian options on our menu.

On a nice day you can also sit outside on the platform and enjoy the peaceful gardens.



We can accommodate small groups. Please call ahead in advance of your visit. Check our Facebook page for opening hours and our menu.

T: 07557505264

Facebook: Museum Coffee Shop, Strathpeffer



Small Planet Trading



Small Planet Trading is a small, friendly, local shop selling environmentally-friendly, ethical, organic and fair-trade products.

We stock (among other things):

- Fair-trade and organic food, drinks & snacks
- Environmentally-friendly soaps, skincare & hair products
- New and second hand books
- Ethically traded crafts
- Local preserves & biscuits
- Wildlife & gardening supplies
- Wool & crafting supplies
- Postcards, greetings cards & notebooks
- Music
- Eco household products



Why not pop in for a browse?

T: 01997 421942

E: info@smallplanettrading.co.uk

www.smallplanettrading.co.uk

Facebook: smallplanettr

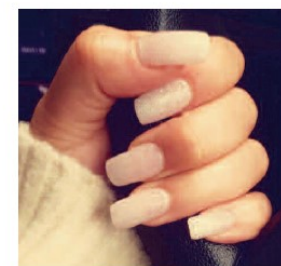


True Beauty



True Beauty Salon offers a professional beautician service in the heart of the village of Strathpeffer. Local and independently owned the salon offers services such as:

- make up application with lashes for all occasions including bridal
- Online make up lessons
- Eyebrow and lip waxing
- Nails - acrylic extensions, gel polish, infills and overlays
- Acti-Labs products for sale



To book an appointment:

T: 07858 740003

Facebook: True Beauty (message)

